

2021 Mineral Resource
103Mt Pit

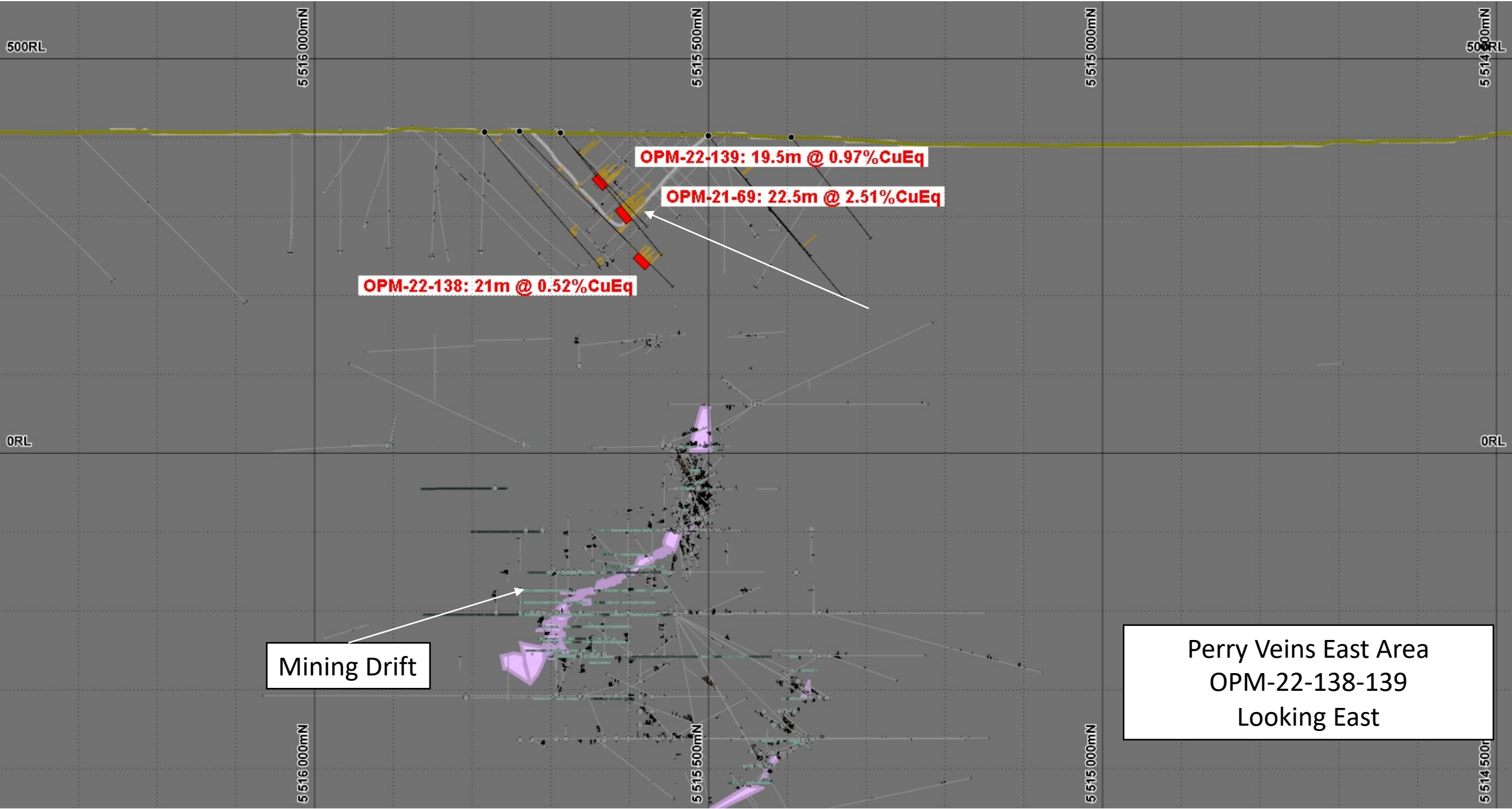
OPM-22-143: 94.5m @ 0.42 CuEq%

OPM-21-122: 184.5m @ 0.32 CuEq%

OPM-22-146: 192m @ 0.33 CuEq%

Mining Drift

Springer Veins North Area
OPM-22-143-146
Looking East



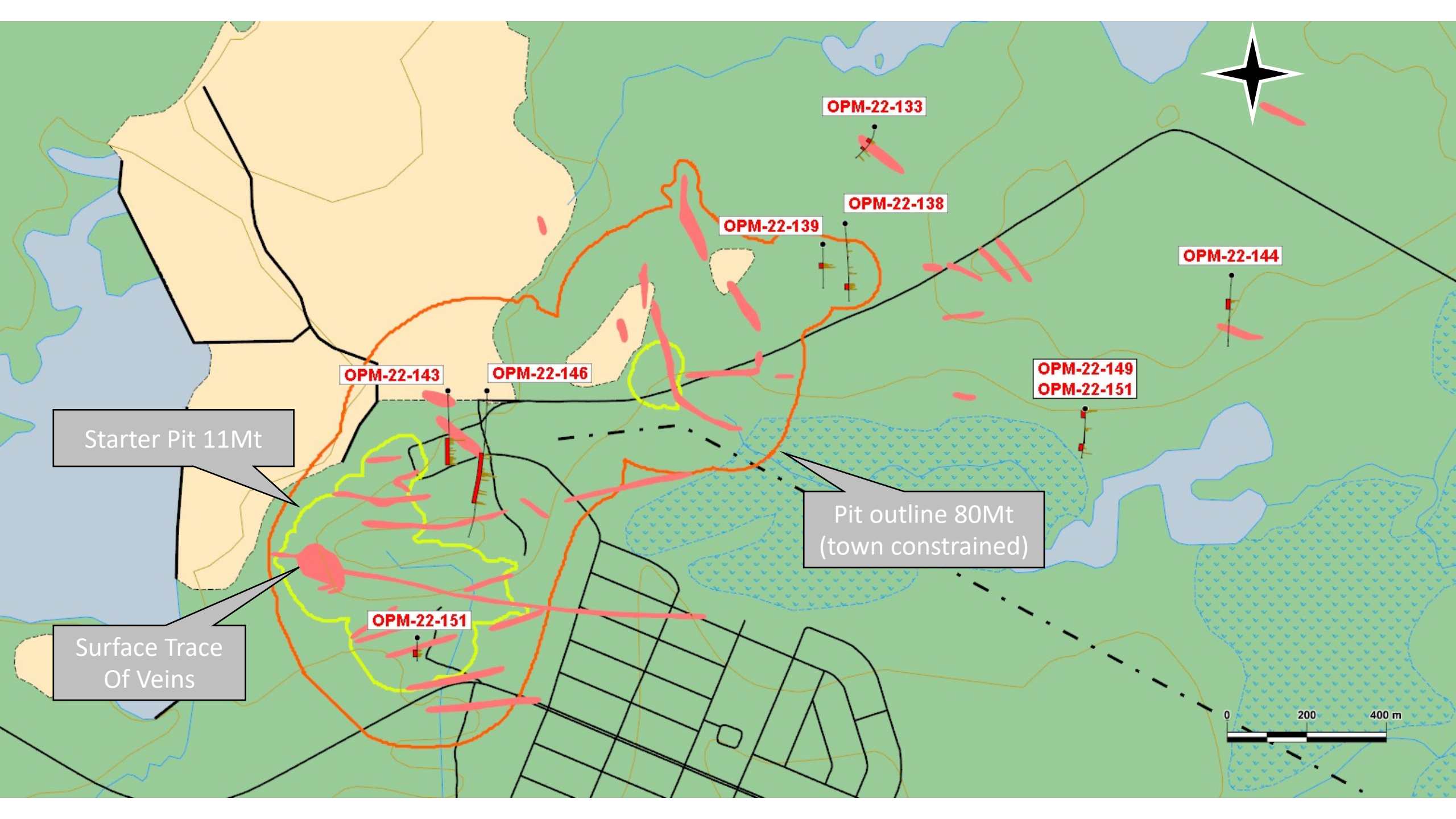
OPM-22-139: 19.5m @ 0.97%CuEq

OPM-21-69: 22.5m @ 2.51%CuEq

OPM-22-138: 21m @ 0.52%CuEq

Mining Drift

**Perry Veins East Area
OPM-22-138-139
Looking East**



OPM-22-133

OPM-22-138

OPM-22-139

OPM-22-144

OPM-22-143

OPM-22-146

OPM-22-149

OPM-22-151

Starter Pit 11Mt

Pit outline 80Mt
(town constrained)

Surface Trace
Of Veins

OPM-22-151

0 200 400 m

OPM-22-134: 9.5m @ 0.20gpt Au

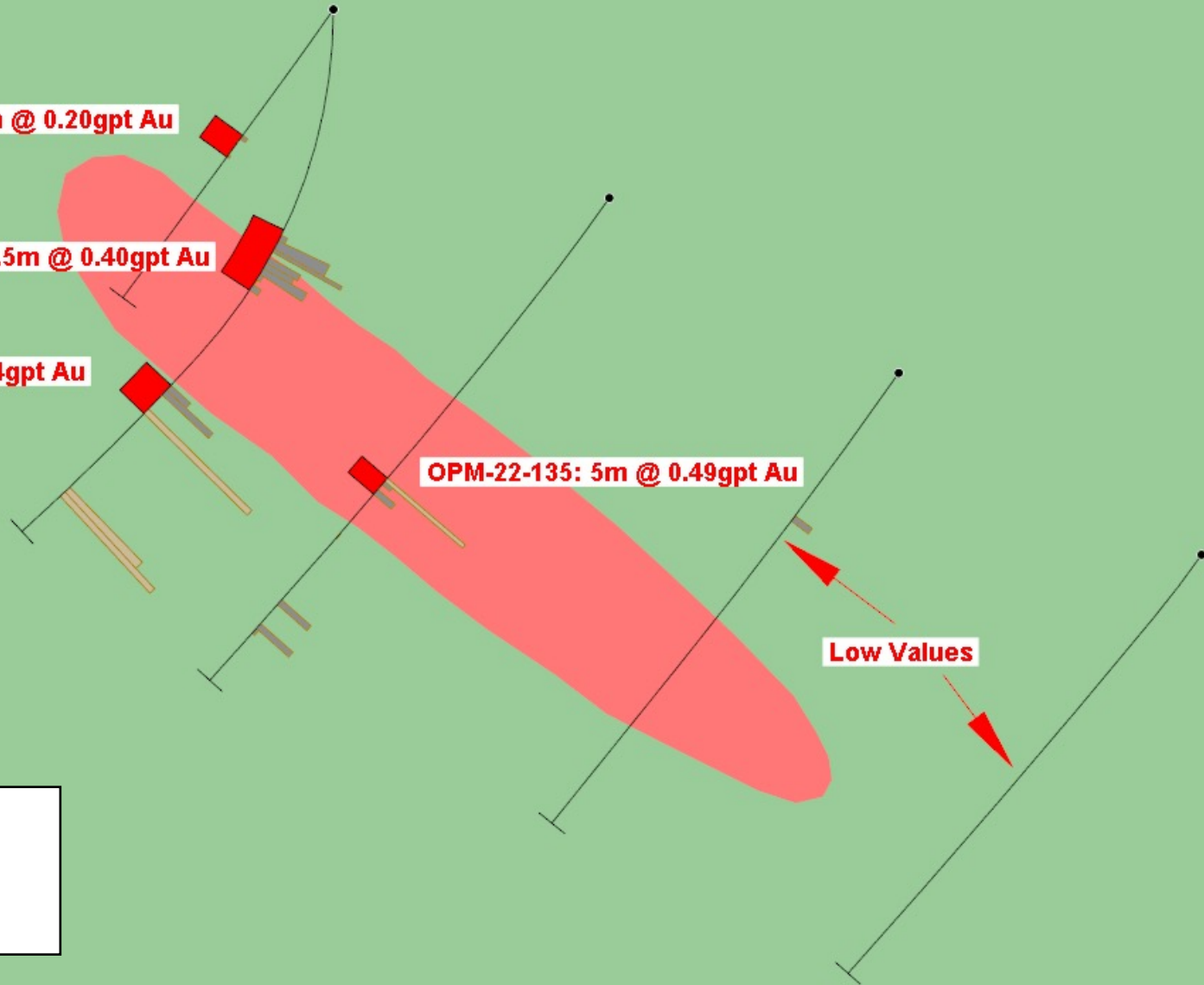
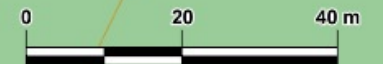
OPM-22-133: 16.5m @ 0.40gpt Au

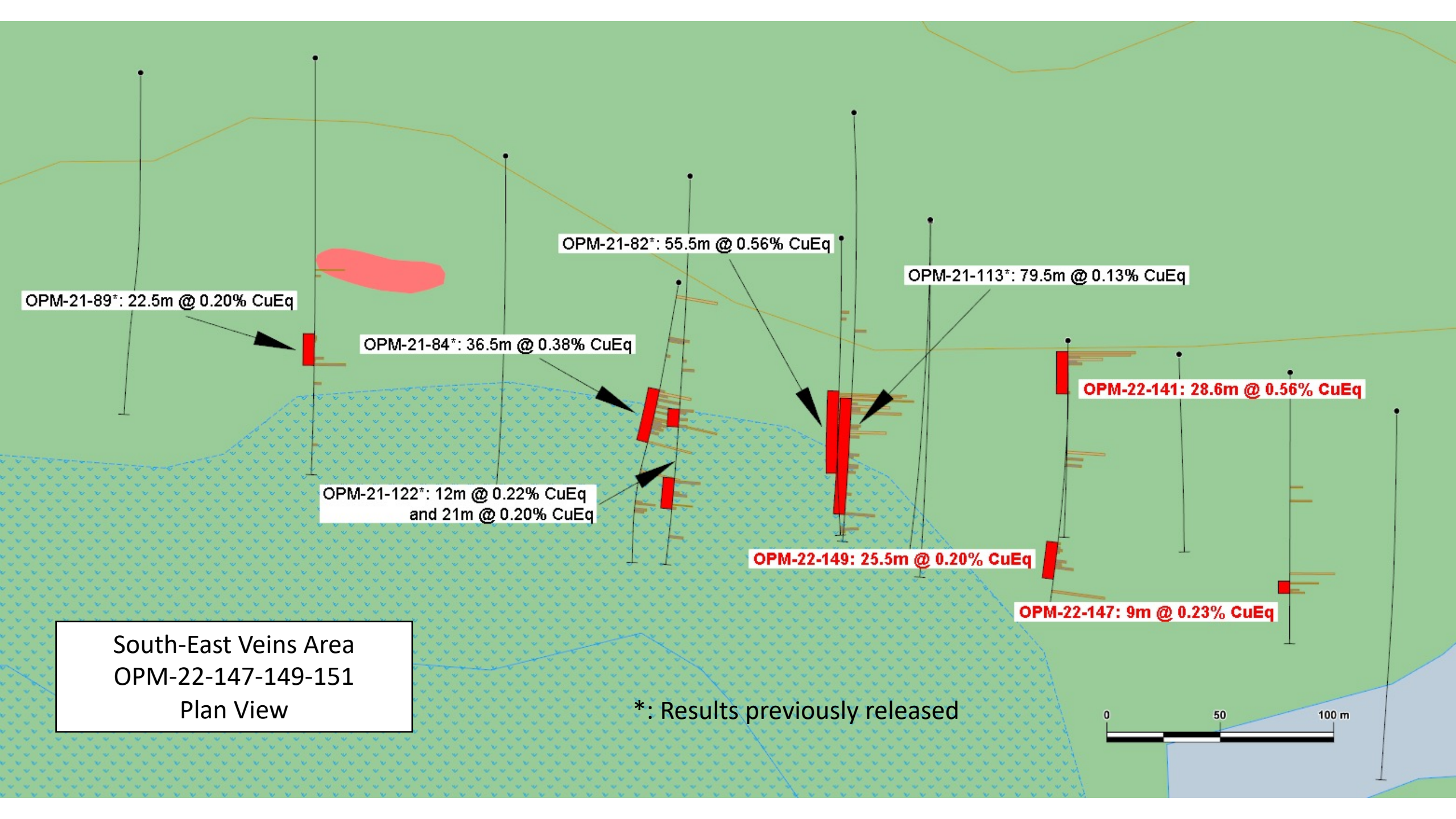
OPM-22-133: 9m @ 0.64gpt Au

OPM-22-135: 5m @ 0.49gpt Au

Low Values

K Veins Area
OPM-22-133
Plan View





OPM-21-89*: 22.5m @ 0.20% CuEq

OPM-21-84*: 36.5m @ 0.38% CuEq

OPM-21-122*: 12m @ 0.22% CuEq
and 21m @ 0.20% CuEq

OPM-21-82*: 55.5m @ 0.56% CuEq

OPM-21-113*: 79.5m @ 0.13% CuEq

OPM-22-141: 28.6m @ 0.56% CuEq

OPM-22-149: 25.5m @ 0.20% CuEq

OPM-22-147: 9m @ 0.23% CuEq

South-East Veins Area
OPM-22-147-149-151
Plan View

*: Results previously released

